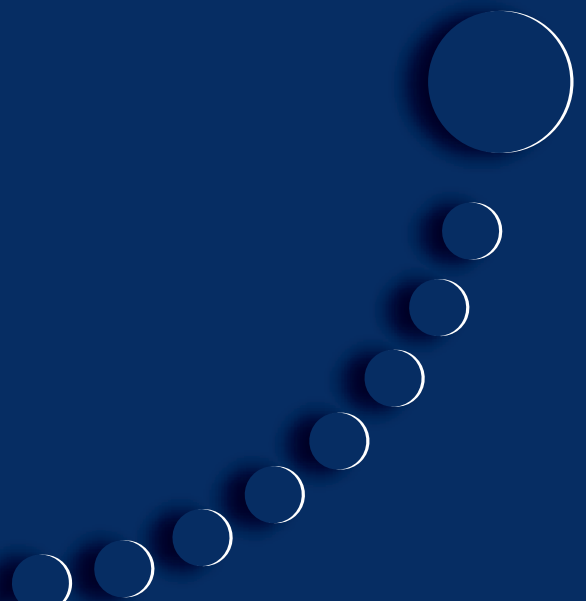




CORPORATE HEALTH & SAFETY MANUAL (HSM)




	HEALTH AND SAFETY MANUAL	Doc Ref:	TOC	Originated by:	IMS-JA-JH-BW
	H&S MANAGEMENT	Originated:	Dec 2009	Revised by:	n/a
	Table of Contents	Revised:	n/a	Authorized by:	SM

Table of Contents

Acknowledgement Form

Document Status

Distribution List

Update Log

Scope and Purpose of Manual

Glossary – Definitions

Listing of Acronyms

Section 1 – Management Involvement and Commitment

1.1 Safety Policies

- 1.1.1 Health and Safety Policy
- 1.1.2 Hazard Identification, Elimination, and Control Policy
- 1.1.3 Enforcement and Discipline Policy
- 1.1.4 Violence in the Workplace Policy
- 1.1.5 Harassment Policy
- 1.1.6 Substance Abuse Policy
- 1.1.7 Social Hosting Substance Abuse Policy
- 1.1.8 Fatigue Management Policy

1.2 Petroleum Industry Guiding Principles for Worker Safety

1.3 Levels of Responsibility


1.4 Management Communication and Reporting

- 1.4.1 Management Tours
- 1.4.2 Newsletters
- 1.4.3 Safety Reporting
- 1.4.4 Job Performance Reviews
- 1.4.5 Safety Checklists
- 1.4.6 Safety Awards Program

Section 2 – Hazard Identification, Elimination, and Control

2.1 Hazard Assessment

- 2.1.1 Hazard Identification
- 2.1.2 Hazard Risk Rating
- 2.1.3 Hazard Control
- 2.1.4 Hazard Reporting
- 2.1.5 Corrective Action and Follow-Up
- 2.1.6 Hazard Assessment Training
- 2.1.7 Emergency Control of a Hazard
- 2.1.8 Emergency Level Definition
- 2.1.9 Emergency Response Guidelines: Criteria Matrix for Classifying Incidents
- 2.1.10 Incident Command System

	HEALTH AND SAFETY MANUAL	Doc Ref:	TOC	Originated by:	IMS-JA-JH-BW
	H&S MANAGEMENT	Originated:	Dec 2009	Revised by:	n/a
	Table of Contents	Revised:	n/a	Authorized by:	SM

2.1.11 Forms

2.2 Safety Inspections and Monitoring Work Sites

- 2.2.1 Overview of Inspections
- 2.2.2 Types of Inspections
- 2.2.3 Inspection Training
- 2.2.4 Management Review
- 2.2.5 Inspection Frequency

2.3 Safe Work Permit System

- 2.3.1 Introduction
- 2.3.2 Types of Work Requiring Safe Work Permits
- 2.3.3 When to Use Safe Work Permits
- 2.3.4 Responsibility
- 2.3.5 Procedure
- 2.3.6 Transfer of Safe Work Permit
- 2.3.7 Close-Out
- 2.3.8 Hot Work

2.4 Warning and Hazard Signs

2.5 Audit Process

- 2.5.1 Preparation for an Audit

2.6 Alberta Certificate of Recognition (COR)

- 2.6.1 Steps to Implementing a COR Program

2.7 Partners in Injury Reductions Program (PIR)


Section 3 – Rules, Procedures, and Practices

3.1 Rules

- 3.1.1 General Rules
- 3.1.2 Prohibitions
- 3.1.3 Expectations for All Workers
- 3.1.4 Off-the-Job Considerations
- 3.1.5 Personal Hygiene
- 3.1.6 Alcohol and Drugs

3.2 Standard Operating Procedures


- 3.2.1 Index of Standard Operating Procedures
- 3.2.2 Standard Operating Procedures Annual Review
- Building Entry (SOP-001)
- Enforcement and Discipline (SOP-002)
- Exemption Standard (SOP-011)
- Harassment Prevention and Resolution (SOP-005)
- Management of Change Program (SOP-003)
- Right to Refuse Unsafe Work (Imminent Danger) (SOP-004)
- Sour Lease Entry (Generic) (SOP-006)
- Substance Abuse (SOP-007)
- Violence in the Workplace (SOP-008)
- Workers' Compensation Board (SOP-009)

	HEALTH AND SAFETY MANUAL	Doc Ref:	TOC	Originated by:	IMS-JA-JH-BW
	H&S MANAGEMENT	Originated:	Dec 2009	Revised by:	n/a
	Table of Contents	Revised:	n/a	Authorized by:	SM

Working Alone (SOP-010)

3.3 Safe Work Practices

- 3.3.1 Safe Work Practices Index
- 3.3.2 Safe Work Practices Annual Review
- Atmospheric (Combustible Gas) Monitoring (SWP-002)
- Blood-Borne/Air-Borne Pathogens Exposure (SWP-004)
- Cellular Telephone Usage (SWP-006)
- Contractor Management Program (SWP-007)
- Cranes, Hoists, and Lifting Devices (SWP-008)
- Electrical Safety (SWP-009)
- Emergency Response Plan (SWP-010)
- Environmental Reporting (Spills and Releases) (SWP-011)
- Excavations and Tunnelling (SWP-060)
- Fall Protection Plan (SWP-012)
- Fatigue and Safety at the Workplace (SWP-070)
- Fires and Explosions – General (SWP-062)
- Fires and Explosions – Operations (SWP-014)
- Fires and Explosions – Welding (SWP-061)
- Gas Detectors and Monitors (SWP-015)
- Ground Disturbance (SWP-016)
- Hand Tools (SWP-017)
- Hantavirus (SWP-054)
- High-Pressure Vessels and Lines (SWP-018)
- Hot Tapping (SWP-019)
- Hot Work (SWP-020)
- Housekeeping (SWP-021)
- Hydrocarbons – Light Hydrocarbon Exposure (SWP-023)
- Illumination (SWP-025)
- Industry Recommended Practice (IRPs) (SWP-027)
- Ladders (SWP-028)
- Lifting and Handling Loads (SWP-063)
- Lockout/Tag Out (Managing the Control of Hazardous Energy) (SWP-029)
- Material Safety Data Sheets (SWP-030)
- Media Relations (SWP-050)
- Medical Emergency Response Plan (First Aid) (SWP-051)
- Medicals (SWP-031)
- Natural Disaster Emergency Response (SWP-052)
- Noise Management (SWP-033)
- Office Safety (SWP-034)
- Personal Protective Equipment (SWP-035)
- Power Tools (SWP-037)
- Powered Mobile Equipment (SWP-069)
- Prime/Principal Contractor (SWP-038)
- Safeguards (SWP-067)
- Safety and Legislative Compliance (SWP-039)
- Safety Stand-by (SWP-040)
- Scaffolding and Temporary Work Platforms (SWP-041)
- Slinging and Rigging Operations (SWP-066)

	HEALTH AND SAFETY MANUAL	Doc Ref:	TOC	Originated by:	IMS-JA-JH-BW
	H&S MANAGEMENT	Originated:	Dec 2009	Revised by:	n/a
	Table of Contents	Revised:	n/a	Authorized by:	SM

Tools, Equipment, and Machinery (SWP-046)
 Transportation of Dangerous Goods (TDG) (SWP-043)
 Valves and Pipe Fittings (SWP-056)
 Vehicle Use On/Off Road Safety (SWP-045)
 Wildlife Driver Safety (SWP-053)
 Working in Cold Temperatures (SWP-047)
 Working in Hot Temperatures (SWP-048)
 Workplace Hazardous Materials Information System (SWP-049)

3.4 Codes of Practice

3.4.1 Codes of Practice Index
 3.4.2 Codes of Practice Annual Review
 Asbestos (COP-001)
 Benzene, Toluene, Ethylbenzene, and Xylene (BTEX) (COP-002)
 Chemical Hazards, Biological Hazards, and Harmful Substances (COP-008)
 Confined Space Entry (COP-003)
 Hydrogen Sulphide (H_2S) (COP-009)
 Methanol (COP-004)
 Release of Harmful Substances (COP-005)
 Respiratory Protective Equipment (COP-006)
 Silica (Crystalline) (COP-010)
 Working in the Vicinity of Electrical Equipment (COP-007)

Section 4 – Training

4.1 Pre-Hiring Requirements

4.2 Training and Education

4.2.1 Responsibilities

4.3 New Worker Safety Orientation

4.4 Site-Specific Orientations

4.5 On-the-Job Training

4.6 Non-Core Training Courses

4.6.1 Behaviour Based Safety – “The Human Side of Safety”

4.7 Certifications

4.8 Industry Recommended Practice - Volume 16 (IRP 16)

4.9 What Makes a Good Safety Officer?

4.9.1 The Eight Ps of Good Safety Management


Section 5 – Communication

5.1 Tailgate (Toolbox) Safety Meeting

5.2 Pre-Job Safety Meetings

5.3 Monthly Safety Meetings

5.4 Corrective Action

	HEALTH AND SAFETY MANUAL	Doc Ref:	TOC	Originated by:	IMS-JA- JH-BW
	H&S MANAGEMENT	Originated:	Dec 2009	Revised by:	n/a
	Table of Contents	Revised:	n/a	Authorized by:	SM

Section 6 – Incident and Accident Reporting and Investigation

6.1 Overview

6.2 Types of Incidents, Hazards, and Near Misses to be Reported

- 6.2.1 Internal Reporting
- 6.2.2 Provincial Reporting
- 6.2.3 Federal Reporting

6.3 Incident Reporting and Investigation

- 6.3.1 Near Miss/Minor Incident Report
- 6.3.2 Incident Report
- 6.3.3 Incident Investigation
- 6.3.4 Incident Causation Codes
- 6.3.5 Loss Causation Model

6.4 Corrective Action


6.5 Communication

6.6 Critical Incident Stress Debriefing (CISD)

Section 7 – Forms

7.1 Index of Forms

- Approved Contractor Variance Program
- Approved Contractors List (Additions and Deletions Request)
- Backfill Inspection Form
- Blood-Borne/Air-Borne Pathogen Exposure Consent Form
- Blood-Borne/Air-Borne Pathogen Post Exposure Evaluations and Follow-Up
- Blood-Borne/Air-Borne Pathogen Training Form
- CAODC Drilling Rig Inspection Form
- CAODC Service Rig Inspection Form
- Comment and Suggestion Form
- Confined Space Entry Log
- Confined Space Entry Permit
- Contractor Pre-Qualification Information Request Letter
- Contractor Pre-Qualification Questionnaire
- Corrective Action Register
- Critical Lift Checklist
- Designation of “Prime/Principal Contractor”
- Emergency Medical Response Procedure and Information
- Emergency Response Checklist
- Emergency Response Forms
- ERP – Incident Event Log
- ERP – Environmental Monitoring Log
- ERP – External Agency Post Incident Evaluation
- Employee Discipline Record
- Employee Job Performance Evaluation Form
- Exemption Request Form
- Facility Inspection Form

	HEALTH AND SAFETY MANUAL	Doc Ref:	TOC	Originated by:	IMS-JA-JH-BW
	H&S MANAGEMENT	Originated:	Dec 2009	Revised by:	n/a
	Table of Contents	Revised:	n/a	Authorized by:	SM

Fall Protection Plan
 First-Aid Report Form
 “First-Aid” Sharing of Resources Agreement
 Ground Disturbance Checklist
 Harassment Complaint Form
 Hazard Assessment Form
 Hazard Report Form
 Health and Safety Policy
 Hot Work Permit
 Incident Report Form
 Incident Investigation Report
 Incident Causation Codes
 Job Hazard Analysis
 Lifting & Handling Task Assessment
 MOC (Management of Change)
 Newsletter
 On-the-Job Training Record Form
 Petroleum Industry Guiding Principles for Worker Safety
 Pre & Post Trip Vehicle Inspection Form
 Responsibility and Accountability for Health and Safety – Contractor
 Responsibility and Accountability for Health and Safety – Employee
 Responsibility and Accountability for Health and Safety – Management
 Responsibility and Accountability for Health and Safety – Supervisor
 Responsibility and Accountability for Health and Safety – Visitor
 Risk Analysis by Job Task
 SAFESTART Program Brochure
 Safe Work Permit
 Safety Checklists
 Safety Meeting Minutes
 Safety Statistics Form
 Safety Training Schedule
 Site Emergency Procedures Form
 Site/Job Hazard Survey
 Supervisor Safety Reporting Compliance
 Suspect and Vehicle Identification Worksheet
 Telephone Threat Report
 Violent Incident Report
 WCB Forms – Alberta
 WCB Forms – British Columbia
 WCB Forms – Saskatchewan
 Worker Orientation Acknowledgement Form
 Working Alone Log Sheet
 Workplace (Office) Inspection Form
 Work Site Inspection Form